



**Government of India  
Ministry of Earth Sciences  
India Meteorological Department**



**Press Release**

**Date: 31<sup>st</sup> August, 2025**

**Time of Issue: 1400 hours IST**

**Subject: i) Heavy to very Heavy rainfall spell likely to continue over Northwest India during next 3-4 days with isolated Extremely heavy rainfall over Himachal Pradesh during 31<sup>st</sup> August to 03<sup>rd</sup> September and Uttarakhand on 31<sup>st</sup> August & 01<sup>st</sup> September; Isolated heavy to very heavy over Jammu during 31<sup>st</sup> August to 02<sup>nd</sup> September & isolated Extremely Heavy rainfall on 02<sup>nd</sup> September, 2025.  
ii) Heavy to very heavy rainfall likely to continue over Konkan & Goa, Madhya Maharashtra, Gujarat Region and Coastal Karnataka during next 7 days with possibility of Extremely heavy rainfall at isolated places over Gujarat during 04<sup>th</sup>-06<sup>th</sup> September.**

**Realised weather during past 24 hours till 0830 hours IST of today, the 31<sup>st</sup> August, 2025:**

- ❖ **Intense rainfall activity** over Chennai region: **Cloud burst** has been observed over Manali area & neighbourhood of Chennai (Tamil Nadu; for more details see [the link](#)).
- ❖ **Heavy to very heavy rainfall with Extremely heavy rainfall ( $\geq 21$  cm)** has been recorded at isolated places over Tamil Nadu.
- ❖ **Very heavy rainfall (12-20 cm)** has been recorded at isolated places over Uttarakhand, Rajasthan, Gujarat Region, East Uttar Pradesh, Odisha.
- ❖ **Heavy rainfall (7-11 cm)** has been recorded at isolated places over Punjab, Himachal Pradesh, West Uttar Pradesh, Haryana Chandigarh & Delhi, Bihar, Arunachal Pradesh, Assam & Meghalaya, West Madhya Pradesh.

**For more details of realised weather, kindly refer [Annexure I](#).**

**i. Weather Systems, Forecast and Warnings (refer to Annexure II & III):**

- ❖ The Monsoon trough at mean sea level runs south of its normal position.
- ❖ An **upper air cyclonic circulation** lay over central parts of Rajasthan in lower tropospheric level.
- ❖ An **upper air cyclonic circulation** lay over northwest Madhya Pradesh & neighbourhood in lower tropospheric levels.
- ❖ The **Western Disturbance** as a **cyclonic circulation** lay over north Pakistan & adjoining Punjab in lower & middle tropospheric levels.
- ❖ An **upper air cyclonic circulation** lay over northwest Bay of Bengal off West Bengal-Odisha coasts in lower & middle tropospheric levels.
- ❖ A fresh **low pressure area** is likely to form over northwest Bay of Bengal around 02<sup>nd</sup> September, 2025.

Under the influence of these systems, the following weather is likely:

**Northwest India:**

- ❖ **Extremely heavy rainfall** very likely at isolated places over Uttarakhand on 31<sup>st</sup> August & 01<sup>st</sup> September, southern parts of Himachal Pradesh during 31<sup>st</sup> August- 02<sup>nd</sup> September, Jammu-Kashmir-Ladakh on 02<sup>nd</sup> September.
- ❖ Isolated **heavy rainfall** likely to continue over Uttarakhand, East Rajasthan during next 7 days; Jammu-Kashmir-Ladakh , Punjab , Haryana Chandigarh & Delhi, West Uttar Pradesh during 31<sup>st</sup> August- 02<sup>nd</sup> September; Himachal Pradesh during 31<sup>st</sup> August- 03<sup>rd</sup> September; East Uttar Pradesh, West Rajasthan on 31<sup>st</sup> August & 01<sup>st</sup> September with **isolated very heavy rainfall very likely over Jammu-Kashmir-Ladakh on 01<sup>st</sup> & 02<sup>nd</sup>; Himachal Pradesh during 31<sup>st</sup> August- 02<sup>nd</sup> September; Uttarakhand at a few places during 31<sup>st</sup> August- 02<sup>nd</sup> ; Punjab at a few places during 31<sup>st</sup> August - 02<sup>nd</sup> September, Haryana Chandigarh & Delhi, West**

**Uttar Pradesh at a few places on 31<sup>st</sup> August & 01<sup>st</sup> September; East Uttar Pradesh on 01<sup>st</sup> September; West Rajasthan on 31<sup>st</sup> August; East Rajasthan on 31<sup>st</sup> August & 01<sup>st</sup> September.**

- ❖ Light/moderate rainfall at most/many places over Northwest India and accompanied with thunderstorm & lightning likely over Uttarakhand during & East Rajasthan during next 7 days; Jammu-Kashmir-Ladakh-Gilgit-Baltistan-Muzaffarabad during next 4 days; Uttar Pradesh & West Rajasthan during next 2 days; Himachal Pradesh on today.

#### **West India:**

- ❖ **Extremely heavy rainfall** very likely at isolated places over Gujarat Region on 04<sup>th</sup> & 05<sup>th</sup>, Saurashtra & Kutch on 05<sup>th</sup> & 06<sup>th</sup>.
- ❖ **Isolated heavy rainfall** is very likely over Gujarat region, Konkan & Goa, Madhya Maharashtra during next 7 days and Marathwada on 02<sup>nd</sup> & 03<sup>rd</sup>, Saurashtra & Kutch during 04<sup>th</sup> -06<sup>th</sup> September with **very heavy rainfall over Gujarat Region on 31<sup>st</sup> August & during 03<sup>rd</sup> -06<sup>th</sup> September; Saurashtra & Kutch during 04<sup>th</sup> -06<sup>th</sup>; Konkan & Goa & Madhya Maharashtra on 03<sup>th</sup>, 04<sup>th</sup> & 05<sup>th</sup>; September.**
- ❖ Light to moderate rainfall accompanied with thunderstorm & lightning at a few places very likely over the region during next 5 days.

#### **East & Central India:**

- ❖ Isolated **heavy rainfall** likely over Madhya Pradesh, Chhattisgarh, during next 5 days; Odisha during next 4 days; Vidarbha on 02<sup>nd</sup>, 03<sup>rd</sup> & 04<sup>th</sup>, Andaman & Nicobar & Bihar Islands on 31<sup>st</sup> August; Sub-Himalayan West Bengal & Sikkim on 01<sup>st</sup> & 02<sup>nd</sup> September with isolated **very heavy rainfall over West Madhya Pradesh on 31<sup>st</sup> August, Odisha on 01<sup>st</sup> & 02<sup>nd</sup> September.**
- ❖ Light to moderate rainfall at most/many places accompanied with thunderstorm & lightning likely over the region during next 5 days.

#### **Northeast India:**

- ❖ Isolated **heavy rainfall** likely to continue over Nagaland, Manipur, Mizoram & Tripura during next 7 days; Assam & Meghalaya on 31<sup>st</sup> August & during 02<sup>nd</sup> -06<sup>th</sup> September, Arunachal Pradesh on 05<sup>th</sup> & 06<sup>th</sup> September.
- ❖ Light/moderate rainfall at many places accompanied with thunderstorm & lightning likely during next 5 days.

#### **South Peninsular India:**

- ❖ Isolated **heavy rainfall** likely over Kerala & Mahe & Coastal Karnataka during next 7 days; ghat area of Tamil Nadu on 31<sup>st</sup> August; North Interior Karnataka on 02<sup>nd</sup>; Coastal Andhra Pradesh & Yanam during 01<sup>st</sup> -03<sup>rd</sup> September; Telangana during 31<sup>st</sup> August -02<sup>nd</sup> September with isolated **very heavy rainfall over Coastal Karnataka on 02<sup>nd</sup> & 03<sup>rd</sup> September.**
- ❖ Light to moderate rainfall accompanied with thunderstorm & lightning at a few places likely over the region during next 5 days.

#### **Fishermen warning:**

Fishermen are advised not to venture into the following from 31<sup>st</sup> August to 05<sup>th</sup> September 2025 to the following Areas:

##### **Arabian Sea (AS)**

Along and off the Somalia, Oman coasts and adjoining sea areas, most parts of central AS and adjoining and many areas of southwest AS during 31<sup>st</sup> August to 05<sup>th</sup> September; over Lakshadweep on 4<sup>th</sup> September; along and off south Gujarat on 31<sup>st</sup> August, 01<sup>st</sup> & 04<sup>th</sup> September, Konkan Goa coasts during 01<sup>st</sup> to 05<sup>th</sup> September; along and off Karnataka coast during 03<sup>rd</sup> to 05<sup>th</sup> September.

##### **Bay of Bengal (BoB):**

Along and off Odisha and adjoining north BoB during 02<sup>nd</sup> to 05<sup>th</sup> September; along and off Andhra Pradesh coasts 01<sup>st</sup> to 05<sup>th</sup> September; south BoB during 31<sup>st</sup> August to 05<sup>th</sup> September; central BoB during 01<sup>st</sup> to 5<sup>th</sup> and North BoB during 02<sup>nd</sup> to 05<sup>th</sup> September;

Over Gulf of Mannar & adjoining Comorin area during 31<sup>st</sup> August to 05<sup>th</sup> September.

Over Andaman Sea during 31<sup>st</sup> August to 05<sup>th</sup> September.

Total suspension of fishing operations is suggested over above mentioned areas and dates.

#### **ii. Weather conditions and forecast over Delhi/NCR during 31<sup>st</sup> August to 03<sup>rd</sup> September 2025 (Annexure IV)**

**For more details, kindly refer National Weather Bulletin:**

[https://mausam.imd.gov.in/responsive/all\\_india\\_forecast\\_bulletin.php](https://mausam.imd.gov.in/responsive/all_india_forecast_bulletin.php)

**For District wise warnings refer:** <https://mausam.imd.gov.in/responsive/districtWiseWarningGIS.php>

**For Fishermen warning refer** <https://rsmcnewdelhi.imd.gov.in/fishermen-warning.php>

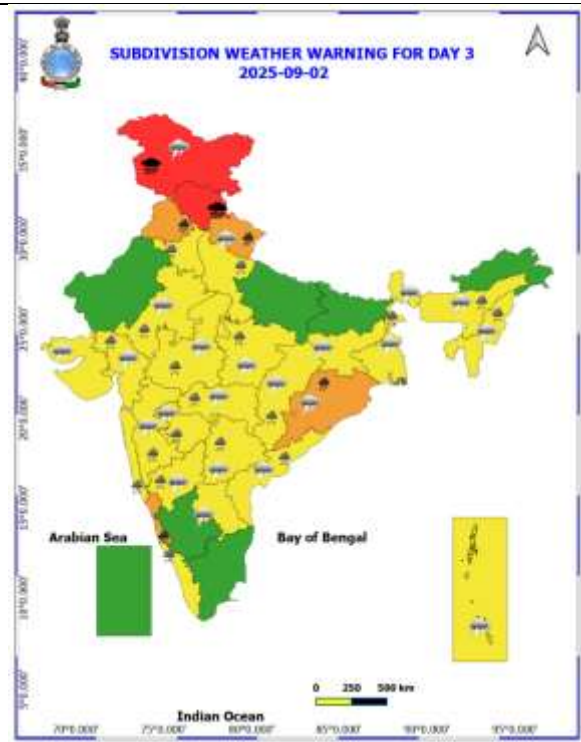
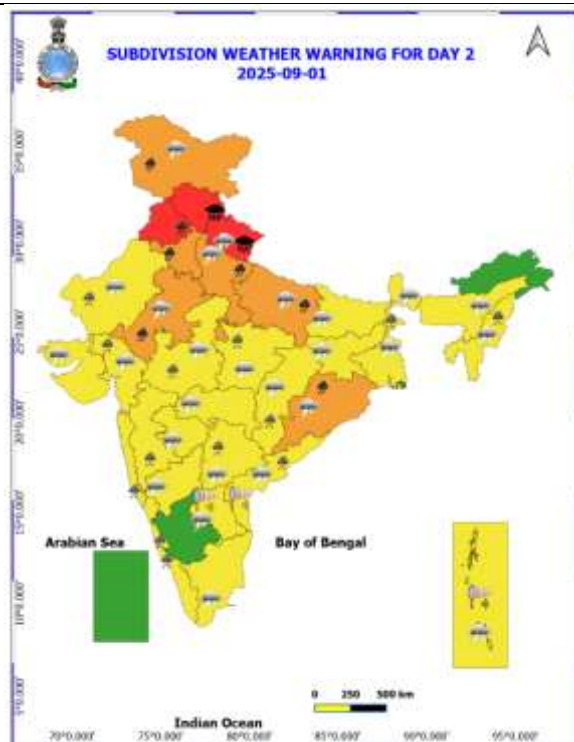
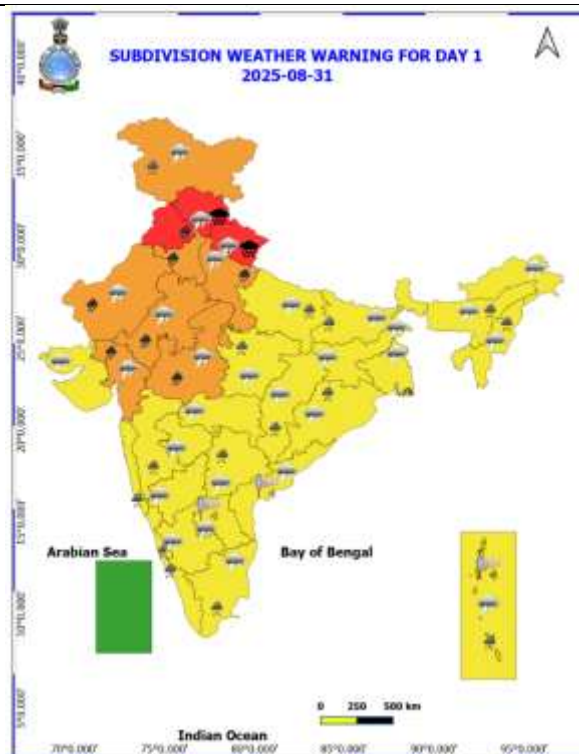
**Rainfall recorded (in cm) during past 24 hours till 0830 hours IST of today, the 31<sup>st</sup> August:**

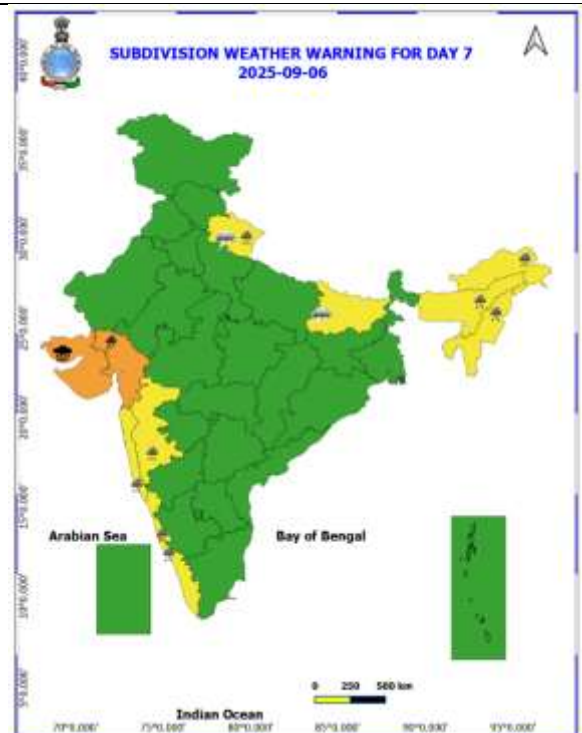
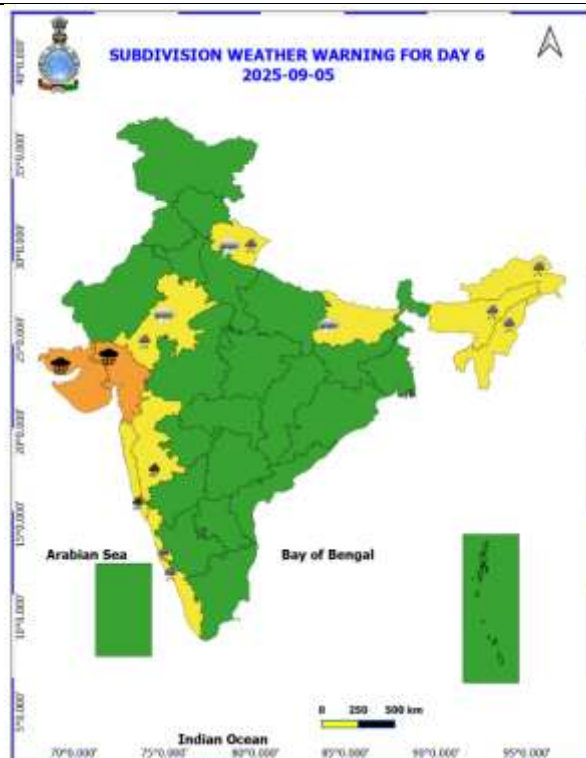
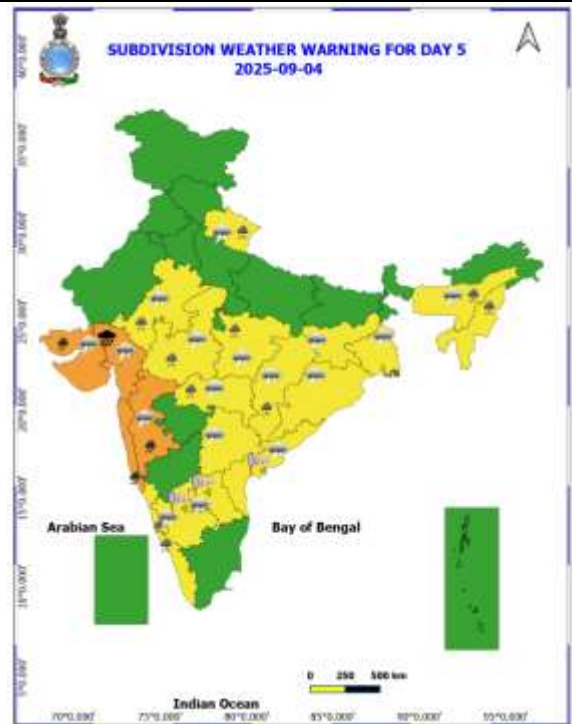
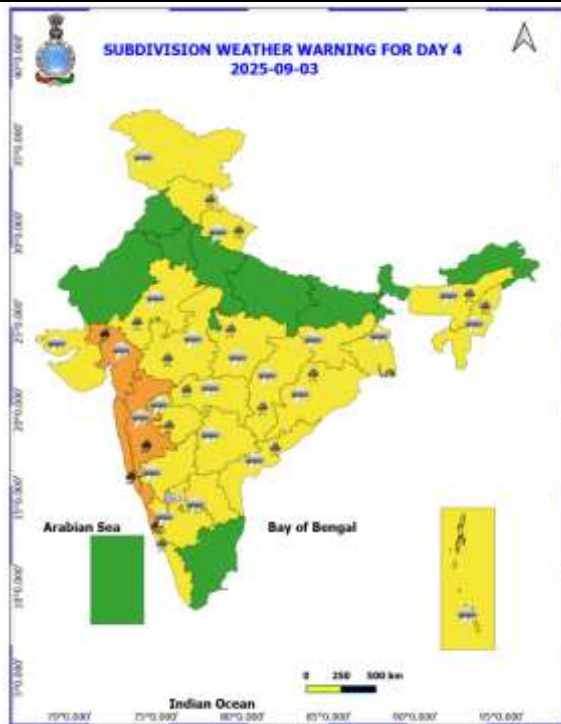
- ❖ **Tamil Nadu, Puducherry & Karaikal:** Zone 02 D15 Manali (dist Chennai) 27, Zone 02 Manali New Town (dist Chennai) 26, Zone 01 Wimco Nagar (dist Chennai) 23, Zone 07 Korattur (W86) (dist Chennai) 18, Zone 07 Korattur (W84) (dist Chennai) 16, Zone 02 Manali New Town (W15) (dist Chennai) 16, Ennore AWS (dist Tiruvallur) 15, Zone 01 Kathivakkam (dist Chennai), Zone 02 Manali (W17) (dist Chennai) 14 each, Zone 01 Thiruvottiyur (dist Chennai) 13, Zone 07 Ayapakkam (dist Chennai) 12, Zone 07 Ambattur (dist Chennai), Ambathur Rev (dist Chennai), Zone 05 Parrys (dist Chennai), Zone 11 Nerkundram (dist Chennai) 11 each, CD Hospital Tondiarpet (dist Chennai), ACS Medical College ARG (dist Kancheepuram), Zone 06 D65 Kolathur (dist Chennai), Ayanavaram Taluk Office (dist Chennai) 10 each, Zone 11 Valasaravakkam (dist Chennai), Zone 04 Tondiarpet (dist Chennai), Chennai(N) AWS (dist Chennai), Zone 05 Kasimedu (dist Chennai) 9 each, Zone 03 Puzhal (dist Chennai), Chennai (N) (dist Chennai), Perambur (dist Chennai), Good Will School Villivakkam ARG (dist Tiruvallur), Puzhal ARG (dist Tiruvallur), Lower Anaicut (dist Thanjavur), Chembarabakkam\_REV (dist Tiruvallur), Uthukottai (dist Tiruvallur), Chembarambakkam ARG (dist Tiruvallur), Red Hills (dist Tiruvallur), Zone 08 Anna Nagar West (dist Chennai), Zone 11 Valasaravakkam (W152) (dist Chennai), Zone 08 Aminjikarai (dist Chennai) 8 each, Poonamalle ARG (dist Tiruvallur), Thamaraiyapakkam (dist Tiruvallur), Taluk Office Pandalur (dist The Nilgiris), Sendurai (dist Ariyalur), Jayamkondam (dist Ariyalur), Zone 15 Okkiam Thuraiyapakkam(W195) (dist Chennai) 7 each,
- ❖ **Uttarakhand:** Banbasa (dist Champawat) 16, Rishikesh (dist Dehradun) 12, Pantnagar (dist Udham Singh Nagar) 11, Khatima (dist Udham Singh Nagar) 9, Uttar Kashi (cwc) (dist Uttarkashi) 8, Kapkot (dist Bageshwar) 7,
- ❖ **West Rajasthan:** Tibi (Hanumangarh) 13, Ganganagar Tehsil (Ganganagar) 10, Hanumangarh (Hanumangarh) 9, Sanchore (Jalore) 8, Ladnoo (Nagaur) 7, Makrana (Nagaur) 7,
- ❖ **Odisha:** Phiringia (dist Kandhamal) 13, Raurkela (dist Sundargarh) 7, Kendrapada Pto (dist Kendrapara) 7, Kendrapara (dist Kendrapara) 7, Joda (dist Keonjhar) 7, Tarva (dist Sonepur) 7, Kuchinda (dist Sambalpur) 7, Dunguripalli (dist Sonepur) 7,
- ❖ **East Rajasthan:** Mahwa (Dausa) 12, Ramgarh shekhavati (Sikar) 10, Chhotisadri (Pratapgarh) 10, Alwar (Alwar) 9, Mount abu (Sirohi) 7, Jaipur Tehsil (Jaipur) 7, Sikar (Sikar) 7, Kathumar (Alwar) 7, Nagar (Bharatpur) 7, Sirohi (Sirohi) 7, Tizara (Alwar) 7,
- ❖ **East Uttar Pradesh:** Shardanagar (dist Kheri) 12, Nighasan (dist Kheri) 8,
- ❖ **Gujarat Region:** Kadana (dist Mahisagar) 12, Umreth (dist Anand) 12, Santrampur (dist Mahisagar) 11, Shahera (dist Panchmahal) 11, Morva Hadaf (dist Panchmahal) 9, Limkheda (dist Dahod) 9, Halol (dist Panchmahal) 8, Borsad (dist Anand) 8, Sanjeli (dist Dahod) 7, Idar (dist Sabarkantha) 7, Vadodara (dist Vadodara) 7,
- ❖ **West Madhya Pradesh:** Khategaon (dist Dewas) 11, Jaora (dist Ratlam) 11, Satwas (dist Dewas) 10, Hatod (dist Indore) 9, Indore (dist Indore) 8, Bagli (dist Dewas) 7, Bhikangaon (dist Khargone) 7,
- ❖ **Punjab:** Nakodar (dist Jalandhar) 9, Garhshankar (dist Hoshiarpur) 7,
- ❖ **Bihar:** Kalyanpur (dist East Champaran) 9, Piprakothi (dist East Champaran) 8,
- ❖ **Himachal Pradesh:** Naina Davi (dist Bilaspur) 8, R L Bmb (dist Bilaspur) 8, Chuari (dist Chamba) 7,
- ❖ **West Uttar Pradesh:** Baheri (dist Bareilly) 8, Tundla (dist Firozabad) 7,
- ❖ **Assam & Meghalaya:** Barapani (dist Ri Bhoi) 8, Tihu Arg (dist Nalbari) 7, Bajali Aws (dist Bajali) 7,
- ❖ **Haryana Chandigarh & Delhi:** Tohana (dist Fatehabad) 7,
- ❖ **Arunachal Pradesh:** Tawang\_Aws (dist Tawang) 7,

Table-1								
7 Days Rainfall Forecast								
S.No.	Subdivision	31- Aug	1- Sep	2- Sep	3- Sep	4- Sep	5- Sep	6- Sep
		Day 1	Day 2	Day 3	Day 4	Day 5	Day 6	Day 7
1	ANDAMAN & NICOBAR ISLANDS	WS	WS	WS	WS	WS	WS	FWS
2	ARUNACHAL PRADESH	SCT	SCT	SCT	SCT	SCT	FWS	FWS
3	ASSAM & MEHGHALAYA	SCT	SCT	FWS	FWS	FWS	FWS	FWS
4	NAGALAND, MANIPUR, MIZORAM AND TRIPURA	FWS	FWS	FWS	FWS	FWS	FWS	FWS
5	SUB HIMALAYAN WEST BENGAL & SIKKIM	FWS	FWS	FWS	FWS	FWS	FWS	FWS
6	GANGETIC WEST BENGAL	SCT	FWS	WS	WS	FWS	FWS	SCT
7	ODISHA	FWS	WS	WS	FWS	FWS	FWS	FWS
8	JHARKHAND	SCT	SCT	FWS	FWS	FWS	FWS	SCT
9	BIHAR	SCT	ISOL	ISOL	ISOL	ISOL	SCT	SCT
10	EAST UTTAR PRADESH	SCT	WS	SCT	ISOL	ISOL	ISOL	SCT
11	WEST UTTAR PRADESH	FWS	WS	FWS	SCT	ISOL	ISOL	ISOL
12	UTTARAKHAND	WS	WS	WS	FWS	FWS	FWS	FWS
13	HARYANA, CHANDIGARH & DELHI	WS	WS	FWS	SCT	ISOL	SCT	SCT
14	PUNJAB	WS	WS	FWS	ISOL	ISOL	ISOL	ISOL
15	HIMACHAL PRADESH	WS	WS	WS	FWS	SCT	SCT	SCT
16	JAMMU AND KASHMIR AND LADAKH	FWS	WS	FWS	SCT	DRY	DRY	DRY
17	WEST RAJASTHAN	FWS	FWS	SCT	SCT	SCT	SCT	SCT
18	EAST RAJASTHAN	WS	WS	FWS	FWS	FWS	FWS	SCT
19	WEST MADHYA PRADESH	FWS	WS	WS	WS	FWS	FWS	FWS
20	EAST MADHYA PRADESH	FWS	WS	WS	WS	FWS	FWS	FWS
21	GUJRAT REGION	WS	WS	WS	WS	WS	WS	WS
22	SAURASHTRA & KUTCH	SCT	SCT	SCT	FWS	FWS	WS	WS
23	KONKAN & GOA	WS	WS	WS	WS	WS	WS	WS
24	MADHYA MAHARASHTRA	SCT	SCT	SCT	FWS	FWS	FWS	SCT
25	MARATHWADA	SCT	SCT	FWS	FWS	FWS	SCT	ISOL
26	VIDARBHA	FWS	FWS	WS	WS	WS	FWS	FWS
27	CHHATTISGARH	FWS	WS	WS	FWS	FWS	FWS	FWS
28	COASTAL ANDHRA PRADESH	SCT	FWS	FWS	FWS	SCT	SCT	ISOL
29	TELANGANA	SCT	FWS	FWS	SCT	SCT	SCT	SCT
30	RAYALASEEMA	ISOL	ISOL	ISOL	ISOL	ISOL	ISOL	ISOL
31	TAMILNADU & PUDUCHERRY	SCT	ISOL	ISOL	ISOL	ISOL	ISOL	ISOL
32	COSTAL KARNATAKA	WS	WS	WS	WS	WS	WS	WS
33	NORTH INTERIOR KARNATAKA	SCT	SCT	FWS	FWS	SCT	SCT	SCT
34	SOUTH INTERIOR KARNATAKA	FWS	SCT	SCT	SCT	SCT	SCT	SCT
35	KERALA AND MAHE	WS	WS	FWS	FWS	FWS	FWS	FWS
36	LAKSHADWEEP	WS	FWS	SCT	SCT	SCT	SCT	SCT

- As the lead period increases forecast accuracy decrease.







- Action may be taken based on ORANGE AND REDCOLOUR warnings.
- Vulnerable regions likely urban and hilly areas action may be initiated for heavy rainfall warning.
- As the lead period increases forecast accuracy decreases.

Detailed districtwise Multi Hazard weather warning for next five days available at  
<https://mausam.imd.gov.in/responsive/districtWiseWarningGIS.php>

**Weather forecast over Delhi/NCR during 31<sup>st</sup> August to 03<sup>rd</sup> September 2025****Past Weather:**

There has been no large change in the minimum temperature and rise in maximum temperature up to 2 - 4°C over Delhi/NCR during the past 24 hours. The maximum and minimum temperatures over Delhi were around 32 to 34°C and 23 to 25°C respectively. The minimum temperature was below normal up to 1 – 2°C and maximum temperature was below normal up to 1 – 2°C. Generally cloudy sky conditions with predominant surface wind from the east/southeast direction with wind speeds up to 16 kmph prevailed during the past 24 hours. Generally cloudy sky conditions with a wind speed of less than 12 kmph from the southeast direction prevailed over the region in the forenoon today.

**Weather Forecast:**

**31.08.2025:** Generally cloudy sky. Few spells of light to moderate rain/thundershowers likely at most places with possibility of Heavy rain at isolated places during evening/ night & early hours. The maximum temperatures over Delhi are likely to be in the range of 29 to 31°C. The maximum temperature will be below normal up to 3 to 5°C. The predominant surface wind will likely be from the southeast direction with a wind speed of up to 10-15 kmph during the afternoon hours. The wind speed will increase becoming less than 18 kmph from the southeast direction during the evening and night.

**01.09.2025:** Generally cloudy sky. Few spells of light to moderate rain/thundershowers likely at most places with possibility of Heavy rain at isolated places during Morning/ Forenoon. The maximum and minimum temperatures over Delhi are likely to be in the range of 29 to 31°C and 22 to 24°C respectively. The minimum temperature will be below normal up to 2 to 4°C and the maximum temperature will be below normal up to 3 to 5°C. The predominant surface wind will likely to be from the southeast direction with a wind speed of up to 10 - 15 kmph during morning hours. The wind speed will gradually increase becoming less than 20 kmph from the southeast direction in the afternoon. The wind speed will decrease becoming less than 16 kmph from the southeast direction during the evening and night.

**02.09.2025:** Generally cloudy sky. Possibility of few spells of very light to light rain/thundershowers at many places with moderate rain at isolated places. The maximum and minimum temperatures over Delhi are likely to be in the range of 30 to 32°C and 21 to 23°C respectively. The minimum temperature will be below normal up to 2 to 4°C and the maximum temperature will be below normal up to 2 to 4°C. The predominant surface wind will likely to be from the southeast direction with a wind speed of up to 12-16 kmph during morning hours. The wind speed will gradually increase becoming less than 20 kmph from the southeast direction in the afternoon. The wind speed will decrease becoming less than 12 kmph from the southeast direction during the evening and night.

**03.09.2025:** Generally cloudy sky. Possibility of one or two spells of very light to light rain/thundershowers at many places. The maximum and minimum temperatures over Delhi are likely to be in the range of 32 to 34°C and 22 to 24°C respectively. The minimum temperature will be below normal up to 2 to 4°C and the maximum temperature will be below normal up to 1 to 2°C. The predominant surface wind will likely be from the southeast direction with a wind speed of less than 15 kmph during the morning hours. The wind speed will gradually increase becoming less than 20 kmph from the southeast direction in the afternoon. The wind speed will decrease becoming less than 16 kmph from the southeast direction during the evening and night.

**Impact expected and Action Suggested due to light to moderate rainfall with thundershowers:**

- Damage to standing crops, Minor to major damage to power and communication lines due to breaking of branches, Partial damage to vulnerable structures due to strong winds, Loose objects may fly.
- People are advised to keep a watch on the weather for worsening conditions and be ready to move to safer places accordingly, stay indoors, close windows & doors and avoid travel if possible, take safe shelters; do not take shelter under trees, do not lie on concrete floors and do not lean against concrete walls, unplug electrical/ electronic appliances, immediately get out of water bodies, keep away from all the objects that conduct electricity.

### Impact & Action Suggested due to

- ❖ **Heavy to very heavy rainfall with Extremely heavy rainfall ( $\geq 21$  cm)** at isolated places over Uttarakhand on 31<sup>st</sup> August & 01<sup>st</sup> September, southern parts of Himachal Pradesh during 31<sup>st</sup> August- 02<sup>nd</sup> September, Jammu-Kashmir-Ladakh on 02<sup>nd</sup> September; Gujarat Region on 04<sup>th</sup> & 05<sup>th</sup>, Saurashtra & Kutch on 05<sup>th</sup> & 06<sup>th</sup>.
- ❖ **Isolated very heavy rainfall** very likely over West Rajasthan, West Madhya Pradesh on 31<sup>st</sup> August; Himachal Pradesh, Punjab, Uttarakhand during 31<sup>st</sup> August- 02<sup>nd</sup> September; Jammu-Kashmir-Ladakh, Odisha on 01<sup>st</sup> & 02<sup>nd</sup>; Haryana Chandigarh & Delhi, West Uttar Pradesh, East Rajasthan at a few places on 31<sup>st</sup> August & 01<sup>st</sup> September; East Uttar Pradesh on 01<sup>st</sup> September; Gujarat Region on 31<sup>st</sup> August & during 03<sup>rd</sup> -06<sup>th</sup> September; Saurashtra & Kutch during 04<sup>th</sup> -06<sup>th</sup>; Konkan & Goa & Madhya Maharashtra on 03<sup>th</sup>, 04<sup>th</sup> & 05<sup>th</sup> September; Coastal Karnataka on 02<sup>nd</sup> & 03<sup>rd</sup> September.

### Impact Expected

- Localized Flooding of roads, water logging in low lying areas and closure of underpasses mainly in urban areas of the above region.
- Occasional reduction in visibility due to heavy rainfall.
- Disruption of traffic in major cities due to water logging in roads leading to increased travel time.
- Minor damage to kutcha roads.
- Possibilities of damage to vulnerable structure.
- Localized Landslides/Mudslides/landslips/mudslips/landsinks/mudsinks.
- Damage to horticulture and standing crops in some areas due to inundation.
- It may lead to riverine flooding in some river catchments (for riverine flooding please visit Web page of CWC)

### Action Suggested

- Check for traffic congestion on your route before leaving for your destination.
- Follow any traffic advisories that are issued in this regard.
- Avoid going to areas that face the water logging problems often.
- Avoid staying in vulnerable structure.

### Agromet advisories for likely impact of Heavy / Heavy to Very Heavy / Extremely Heavy Rainfall

- In **Uttarakhand**, maintain proper drainage channels in fields of green gram, black gram, barnyard millet and finger millet in **Sub Humid Sub Tropic Zone** and rice, green gram, black gram, sugarcane, maize, groundnut, soybean, finger millet and vegetables in **Bhabar and Tarai Zone**. In **Hill Zone**, postpone sowing of vegetable pea and radish and provide proper drainage in fields of finger millet, kidney beans and vegetables.
- In **Himachal Pradesh**, maintain proper drainage channels in ginger, turmeric and maize fields in **Mid Hills Sub Humid Zone** and rice, maize and vegetable fields in **Sub Montane and Low Hills Sub Tropical Zone**. In **High Hills Sub Temperate Wet Zone**, postpone transplanting of cabbage and cauliflower. Cover the vegetable nursery and crop with poly sheet and ensure adequate drainage in fields of maize, finger millet and vegetables to avoid water stagnation.
- In **Jammu and Kashmir**, make arrangements to drain out excess rain water from fields of rice, maize, green gram and black gram in **Sub Tropical Zone** and maize, *kharif* pulses, rice and vegetables in **Intermediate Zone**.
- In **Punjab**, make arrangements to drain out excess water from fields of sugarcane, green gram and chilli in **Undulating Plain Zone**; cotton and maize in **Western Zone**; cotton, maize and vegetables in **Central Plain Zone**; cotton and sugarcane in **Western Plain Zone** and green gram and soybean in **Sub Montane Undulating Zone**.
- In **Haryana**, make arrangements to drain out excess water from fields of cotton, pearl millet, green gram and cluster bean in **Western Zone** and sugarcane, cotton, maize, pearl millet and vegetables in **Eastern Zone**.
- In **Uttar Pradesh**, make proper arrangements for drainage of excess rain water in pigeon pea and vegetables fields in **Western Plain Zone** and maize, pulses and oilseed crops in **South Western Semi Arid Zone**.
- In **Rajasthan**, make proper drainage arrangements in vegetable nurseries and fields of cotton, maize, soybean and pulses in **Sub Humid Southern Plain and Aravali Hill Zone**; vegetable nurseries and fields of



standing crops such as pearl millet, black gram and sesame in **Flood Prone Eastern Plain Zone** and pearl millet, green gram, sesame and moth bean in **Arid Western Plain Zone**.

- In **Madhya Pradesh**, provide adequate drainage in fields of soybean, maize and vegetables in **Malwa Plateau Zone** and maize, soybean, green gram, black gram, pigeon pea and vegetables in **Gird Zone**.
- In **Gujarat**, make arrangements to drain out excess rain water from fields of rice, sugarcane, okra, tuber crops and vegetables in **South Gujarat Heavy Rainfall Zone**; rice, cotton, sugarcane, pigeon pea and fruit orchards (banana and mango) in **South Gujarat Zone** and rice, pearl millet, pigeon pea, cotton, soybean, maize and castor in **Middle Gujarat Zone**.
- In **Odisha**, make provision for draining out excess rain water from fields of rice, black gram, green gram, pigeon pea, **maize, groundnut and vegetables in Eastern Ghat High Land Zone and South Eastern Ghat Zone** and rice, **maize**, pigeon pea, and vegetables in **North Eastern Ghat Zone** and rice, cotton, pigeon pea and **maize in Western Undulating Zone**.

### Livestock / Fishery

- Keep the animals inside the shed during heavy rainfall and provide them balanced feed.
- Store feed and fodder in a safe place to prevent spoilage.
- Construct an outlet with proper netting around the ponds to drain out excess water, thereby preventing fish from escaping in case of overflow.

### Agromet advisories for likely impact of Thunderstorm / Gusty Winds / Squally Winds (Based on the IBF and advisories issued by different AMFUs)

- Provide mechanical support to horticultural crops and staking or support to vegetables and young fruit plants / fruit-bearing plants to avoid lodging due to strong winds.

### Flash flood guidance:

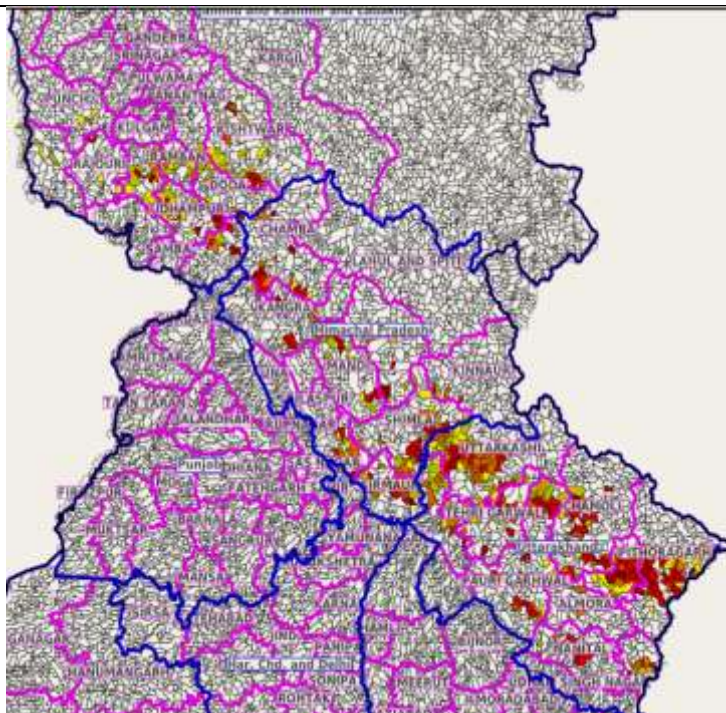
24 hours Outlook for the Flash Flood Risk (FFR) till 1130 IST of 01-09-2025 :

Moderate to High flash flood risk likely over few watersheds & neighbourhoods of following Met Sub-divisions during next 24 hours.

Himachal Pradesh - Chamba, Kangra, Kinnaur, Kullu, Mandi, Shimla, Sirmaur and Solan districts.  
Jammu & Kashmir & Ladakh - Anantnag, Doda, Kathua, Kistwar, Punch, Rajouri, Ramban, Riasi, Udhampur and Mirpur districts.

Uttarakhand - Almora, Bageshwar, Chamoli, Champawat, Dehradun, Nanital, Pauri Garhwal, Pithoragarh, Rudraprayag, Tehri Garwal and Uttarkashi districts.

Surface runoff/ Inundation may occur at some fully saturated soils & low-lying areas over Area of Concern (AoC) as shown in map due to expected rainfall occurrence in next 24 hours.



### Legends & abbreviations:

- ❖ **Heavy Rain:**64.5-115.5mm; **Very Heavy Rain:**115.6-204.4mm; **Extremely Heavy Rain:** >204.4mm.
- ❖ **Obsy:** Observatory; Automatic Weather Station; **ARG:** Automatic Rain Gauge; **dist:** District; **NH:** National Highway; **KVK:** Krishi Vigyan Kendra; **DVC:** Damodar Valley Corporation; **PTO:** Part Time Office, **Aero:** Aerodrome, **IAF:** Indian Air Force.
- ❖ **Region wise classification of meteorological Sub-Divisions:**
  - **Northwest India:** Western Himalayan Region (Jammu-Kashmir-Ladakh-Gilgit-Baltistan-Muzaffarabad, Himachal Pradesh and Uttarakhand); Punjab, Haryana-Chandigarh-Delhi; West Uttar Pradesh, East Uttar Pradesh, West Rajasthan and East Rajasthan.
  - **Central India:** West Madhya Pradesh, East Madhya Pradesh, Vidarbha and Chhattisgarh.
  - **East India:** Bihar, Jharkhand, Sub-Himalayan West Bengal & Sikkim; Gangetic West Bengal, Odisha and Andaman & Nicobar Islands.
  - **Northeast India:** Arunachal Pradesh, Assam & Meghalaya and Nagaland, Manipur, Mizoram & Tripura.
  - **West India:** Gujarat Region, Saurashtra & Kutch, Konkan & Goa, Madhya Maharashtra and Marathawada.
  - **South India:** Coastal Andhra Pradesh & Yanam, Telangana, Rayalaseema, Coastal Karnataka, North Interior Karnataka, South Interior Karnataka, Kerala & Mahe, Tamil Nadu, Puducherry & Karaikal and Lakshadweep.

## LEGENDS

1. अंडमान और निकोबार द्वीपसमूह

2. अरुणाचल प्रदेश

3. असम और मेघालय

4. नागालैंड, मणिपुर, मिजोरम और त्रिपुरा

5. उप-हिमालयी पश्चिम बंगाल और सिक्किम

6. गंगीय पश्चिम बंगाल

7. ओडिशा

8. झारखंड

9. बिहार

10. पूर्वी उत्तर प्रदेश

11. पश्चिम उत्तर प्रदेश

12. उत्तराखंड

13. हरियाणा, चंडीगढ़ और दिल्ली

14. पंजाब

15. हिमाचल प्रदेश

16. जम्मू और कश्मीर और लद्दाख

17. पश्चिम राजस्थान

18. पूर्वी राजस्थान

19. पश्चिम मध्य प्रदेश

20. पूर्वी मध्य प्रदेश

21. गुजरात

22. सौराष्ट्र

23. कोंकण और गोवा

24. मध्य महाराष्ट्र

25. मराठवाड़ा

26. विदर्भ

27. छत्तीसगढ़

28. तटीय आंध्र प्रदेश और यनम

29. तेलंगाना

30. रायलसीमा

31. तमिलनाडु, पुडुचेरी और कराईकल

32. तटीय कर्नाटक

33. आंतरिक उत्तरी कर्नाटक

34. आंतरिक दक्षिणी कर्नाटक

35. केरल और माहे

36. लक्षद्वीप



1. Andaman & Nicobar Islands

2. Arunachal Pradesh

3. Assam & Meghalaya

4. Nagaland, Manipur, Mizoram & Tripura

5. Sub-Himalayan West Bengal & Sikkim

6. Gangetic West Bengal

7. Odisha

8. Jharkhand

9. Bihar

10. East Uttar Pradesh

11. West Uttar Pradesh

12. Uttarakhand

13. Haryana, Chandigarh & Delhi

14. Punjab

15. Himachal Pradesh

16. Jammu & Kashmir and Ladakh

17. West Rajasthan

18. East Rajasthan

19. West Madhya Pradesh

20. East Madhya Pradesh

21. Gujarat

22. Saurashtra

23. Konkan & Goa

24. Madhya Maharashtra

25. Marathwada

26. Vidarbha

27. Chhattisgarh

28. Coastal Andhra Pradesh & Yanam

29. Telangana

30. Rayalaseema

31. Tamilnadu, Puducherry & Karaikal

32. Coastal Karnataka

33. North Interior Karnataka

34. South Interior Karnataka

35. Kerala & Mahe

36. Lakshadweep

## SPATIAL DISTRIBUTION (% of Stations reporting)

% Stations	Category	% Stations	Category
76-100	Widespread (WS/Most Places)	26-50	Scattered (SCT/A Few Places)
51-75	Fairly Widespread (FWS/Many Places)	1-25	Isolated (ISOL)



Fog



Heavy Snow



Cold Wave



Heavy Rain



Dust Storm



Cold Day



Very Heavy Rain



Heat Wave



Ground Frost



Extremely Heavy Rain



Warm Night



Thunder & Lightning



Hot Day



Hailstorm



Hot & Humid



Dust Raising Winds



Strong Surface Winds

### COLOUR CODED WARNING

No Warning (No Action)

Watch (Be Aware)

Alert (Be Prepared To Take Action)

Warning (Take Action)

### Probabilistic Forecast

Terms	Probability of Occurrence (%)
Unlikely	< 25
Likely	25 - 50
Very Likely	50 - 75
Most Likely	> 75

\* Red colour warning does not mean "Red Alert", Red colour warning means "Take Action".

Forecast and Warning for any day is valid from 0830 hours IST of day till 0830 hours IST of next day.

For more details, kindly visit <https://mausam.imd.gov.in> or contact: 011-2434-4599

(Service to the Nation since 1875)



## DEFINITION/CRITERIA

### Rain/ Snow \*

Heavy: 64.5 to 115.5 mm/cm \*  
Very Heavy: 115.6 to 204.4 mm/cm \*  
Extremely Heavy: > 204.4 mm/cm \*

### Heat Wave

When maximum temperature of a station reaches  $\geq 40^{\circ}\text{C}$  for plains and  $\geq 30^{\circ}\text{C}$  for hilly regions  
(a) Based on Departure from normal

Heat Wave: Maximum Temperature Departure from normal  $4.5^{\circ}\text{C}$  to  $6.4^{\circ}\text{C}$ .

Severe Heat Wave: Maximum Temperature Departure from normal  $\geq 6.5^{\circ}\text{C}$

(b). Based on Actual maximum temperature

Heat Wave: When actual maximum temperature  $\geq 45^{\circ}\text{C}$ .

Severe Heat Wave: When actual maximum temperature  $\geq 47^{\circ}\text{C}$ .

(c). Criteria for heat wave for coastal stations

When maximum temperature departure is  $> 4.5^{\circ}\text{C}$  from normal. Heat Wave may be described provided maximum temperature  $\geq 37^{\circ}\text{C}$ .

### Warm Night

When maximum temperature remains  $40^{\circ}\text{C}$

Warm Night: When minimum temperature departure  $4.5^{\circ}\text{C}$  to  $6.4^{\circ}\text{C}$ .

Severe Warm Night: When minimum temperature departure  $> 6.4^{\circ}\text{C}$ .

### Cold Wave

When minimum temperature of a station  $\leq 10^{\circ}\text{C}$  for plains and  $\leq 0^{\circ}\text{C}$  for hilly regions.

(a). Based on departure

Cold Wave: Minimum Temperature Departure from normal  $-4.5^{\circ}\text{C}$  to  $-6.4^{\circ}\text{C}$ .

Severe Cold Wave: Minimum Temperature Departure from normal  $\leq -6.5^{\circ}\text{C}$

(b) Based on actual Minimum Temperature (for Plains only)

Cold Wave: When Minimum Temperature is  $\leq 4.0^{\circ}\text{C}$

Severe Cold Wave: When Minimum Temperature is  $\leq 2.0^{\circ}\text{C}$

(c) For Coastal Stations

When Minimum Temperature departure is  $\leq -4.5^{\circ}\text{C}$  & actual Minimum Temperature is  $\leq 15^{\circ}\text{C}$

### Cold Day

When minimum temperature of a station  $\leq 10^{\circ}\text{C}$  for plains and  $\leq 0^{\circ}\text{C}$  for hilly regions

Based on departure

Cold Day: Maximum Temperature Departure from normal  $-4.5^{\circ}\text{C}$  to  $-6.4^{\circ}\text{C}$ .

Severe Cold Day: Maximum Temperature Departure from normal  $\leq -6.5^{\circ}\text{C}$

### Fog

Phenomenon of small droplets suspended in air and the horizontal visibility  $< 1\text{km}$

Moderate Fog: When the visibility between 500-200 metres

Dense Fog: when the visibility between 50- 200 metres

Very Dense Fog: when the visibility  $< 50$  metres

### Thunderstorm

Sudden electrical discharges manifested by a flash of light (Lightning) and a sharp rumbling sound (thunder)

### Dust/Sand Storm

An ensemble of particles of dust or sand energetically lifted to great heights by a strong and turbulent wind.

### Frost

Ice deposits on ground

Air temperature  $\leq 4^{\circ}\text{C}$  ( over Plains)

### Squall

A strong wind that rises suddenly, lasts for atleast 1 minute.

Moderate: Wind speed 52-61 kmph

Severe: Wind speed 62-67 kmph

Very Severe: Wind speed  $> 67$  kmph

### Sea State

Effect of various waves in the sea over specific area

Rough to very rough: Wind speed 41-62 kmph (22-33 knots) & Wave height 2.5-6 metre

High to very high: Wind speed 63-117 kmph ( 34-63 knots) & Wave height 6-14 metre

Phenomenal: Wind speed  $> 117$  kmph ( $> 63$  knots) & Wave height  $> 14$  metre

### Cyclone

Cyclonic Storm: Wind speed 62-87 kmph (34-47 knots)

Severe Cyclonic Storm: Wind speed 88-117 kmph (48-63 knots)

Very Severe Cyclonic Storm: Wind speed 118-165 kmph (64 - 89 knots)

Extremely Severe Cyclonic Storm: Wind speed 166-220 kmph (90 -119 knots)

Super Cyclone Storm: Wind speed  $> 220$  kmph ( $> 119$  knots)

\* Red colour warning does not mean "Red Alert", Red colour warning means "Take Action".

Forecast and Warning for any day is valid from 0830 hours IST of day till 0830 hours IST of next day.

For more details, kindly visit <https://mausam.imd.gov.in> or contact: 011-2434-4599

(Service to the Nation since 1875)

**Hot and Humid:** When maximum temperatures remain  $3^{\circ}\text{C}$  above normal along with the above normal relative humidity.